

**TECHNICAL SPECIFICATION**  
**BAGGAGE WRAPPING MACHINE MODEL BW-400**  
**DOUBLE SIDED TERMINAL**

---

**YEAR 2014**

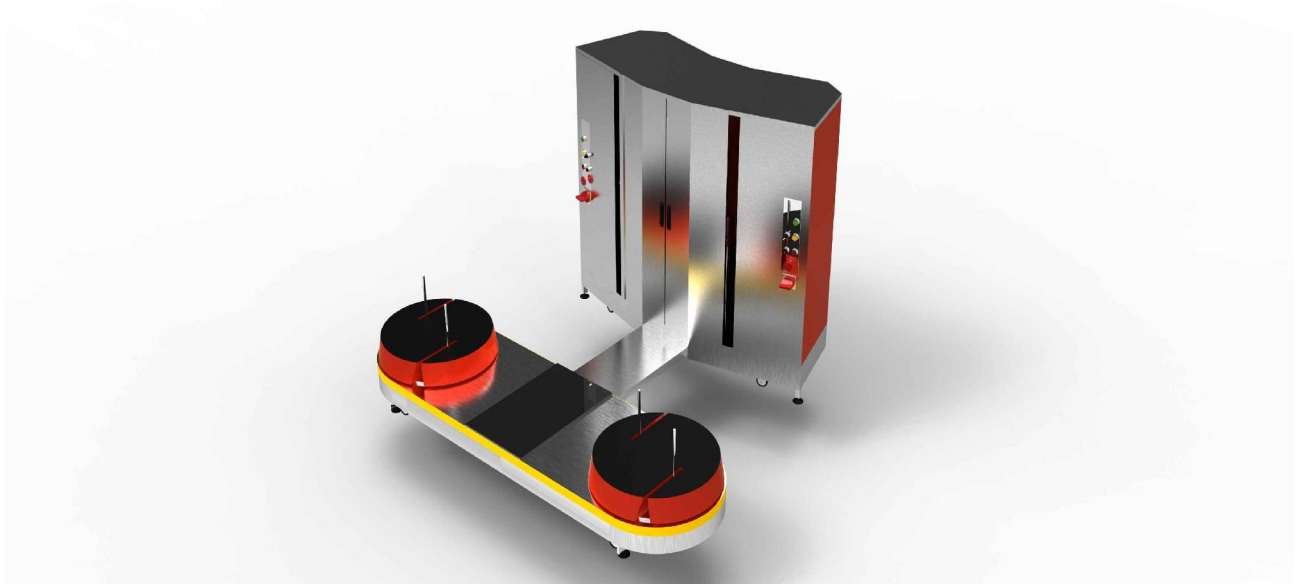
---

MANUFACTURER: SATEL-95 LTD. / BULGARIA / [www.baggagewrapping.com](http://www.baggagewrapping.com)



1. Baggage wrapping model BW-400 (touch screen operational model), designated for packing passenger belongings such as suitcases, luggage and other items, acceptable for transportation from the airlines (as per IATA regulation and baggage restrictions).
2. Back side storage compartment (made in steel)
3. **New!** Top mounted flashing illuminating board for advertisement slogans (slogan not applied)
4. Frame made from stainless steel (the base) , tower made from 1.5 mm steel
  - 4.1. Paint - powder wear-resistible, heat treated, thickness no less than 30 microns (blue and silver metallic)
  - 4.2. Schneider electric control board CPU device
  - 4.3. **Model Schneider Electric Magelis XMI GTO – 2300 advanced colour graphics 5,7 TFT , part No: 124856A000705**
  - 4.4. Current Transformer type **Schneider** and stabilization - 220 V to 24 V el. power
  - 4.5. Frequency adjustment set model type **Altivar 11, 0.18 KW**, version 2.2., made from **Tellemechanique** – France (motor speed controller) – ATV12HO37 M2 (2 units);

- 4.6. Frequency adjustment set model model **Altivar 31, 0.18 KW**, version 2.2., made from **Tellemechanique** – France (motor speed controller)–ATV312HO37M2 (1 )
- 4.7. Photo sensitive device model **Osprey (Tellemechanique)** - HUK5APANL2 (1 pcs) + **one spare part included;**
- 4.8. Analogue proximity sensor model **XS1-M 18AB 110/120 (Tellemechanique)**
- 4.9. Proximity sensor (switcher) model **XS2-M 12AB 110/120 (Tellemechanique)**
- 4.10. Electrical Engines:**
- 0.18 KWatt, 1450 r/min, 3 phases + ground, made Italy- **DRDrives (Italy made)** - 2
  - 0.37 KWatt, 1450 r/min, 3 phases + ground, made Italy – **DRDrives** – 1
  - reduction gear box SW-40, I = 60, worm gear box type – **Almo (Italy)**
  - reduction gear box SW-50, I = 40, worm gear box type - **Almo (Italy)**
  - heavy duty chain and sproken mechanism model T-8
- 4.11. Main electrical parts for the automation made from Schneider electric**
- 4.12. Front operational panel, made from stainless steel, operational buttons made from **Elmark (USA)** including the functions:
- Emergency stop **XB4BS142** on the front site of the machine in case of emergency stop as well a key/switch to turn ON/OFF the machine by the successful Proposer
  - Reset / folio pull / Manual / auto cycles
  - Adjustment set for the rotation speed (speed controller) – 2 pcs
  - Joy/stick Schneider electric **HD4PA22**
  - Tension adjustment – Potentiometers 2.2 k/m (speed controllers) **SZ1RV1202**



5. Powered pre-stretch mechanism installed on the folio cartridge - pre-stretch ration more than 200 % (belt driven).



6. Inside build electronic counter for the numbers of the luggage wrapped - one main and one for each shift
  7. Machine installed on heavy duty wheels for smooth transportation
  8. Steps installed for frame-shaking protection
  9. Material for usage: stretch-folio type - 50 sm. width, 1500 meters long, 23 microns in thickness, 75 mm hard core inside the roll – 2 peaces
  10. Electrical power supply: 220 V, 50 Hertz current
- 

#### ADDITIONAL EQUIPMENT INSTALLED (OPTIONAL)

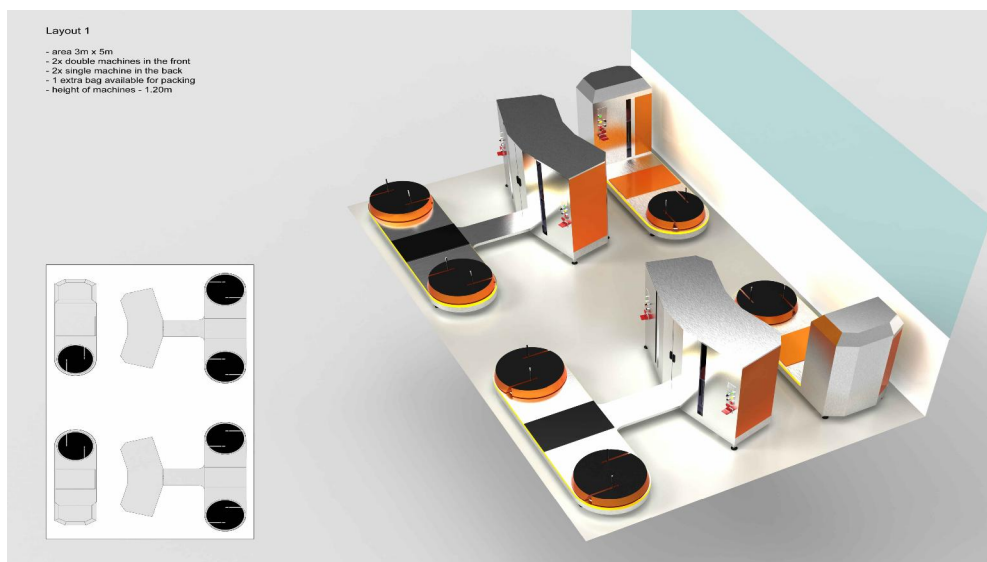
1. CCTV cameras – **digital recording system (DVR)**, including Sony camera (day/night vision) and GEOVISIONN Video Capture Card - H/W Compression



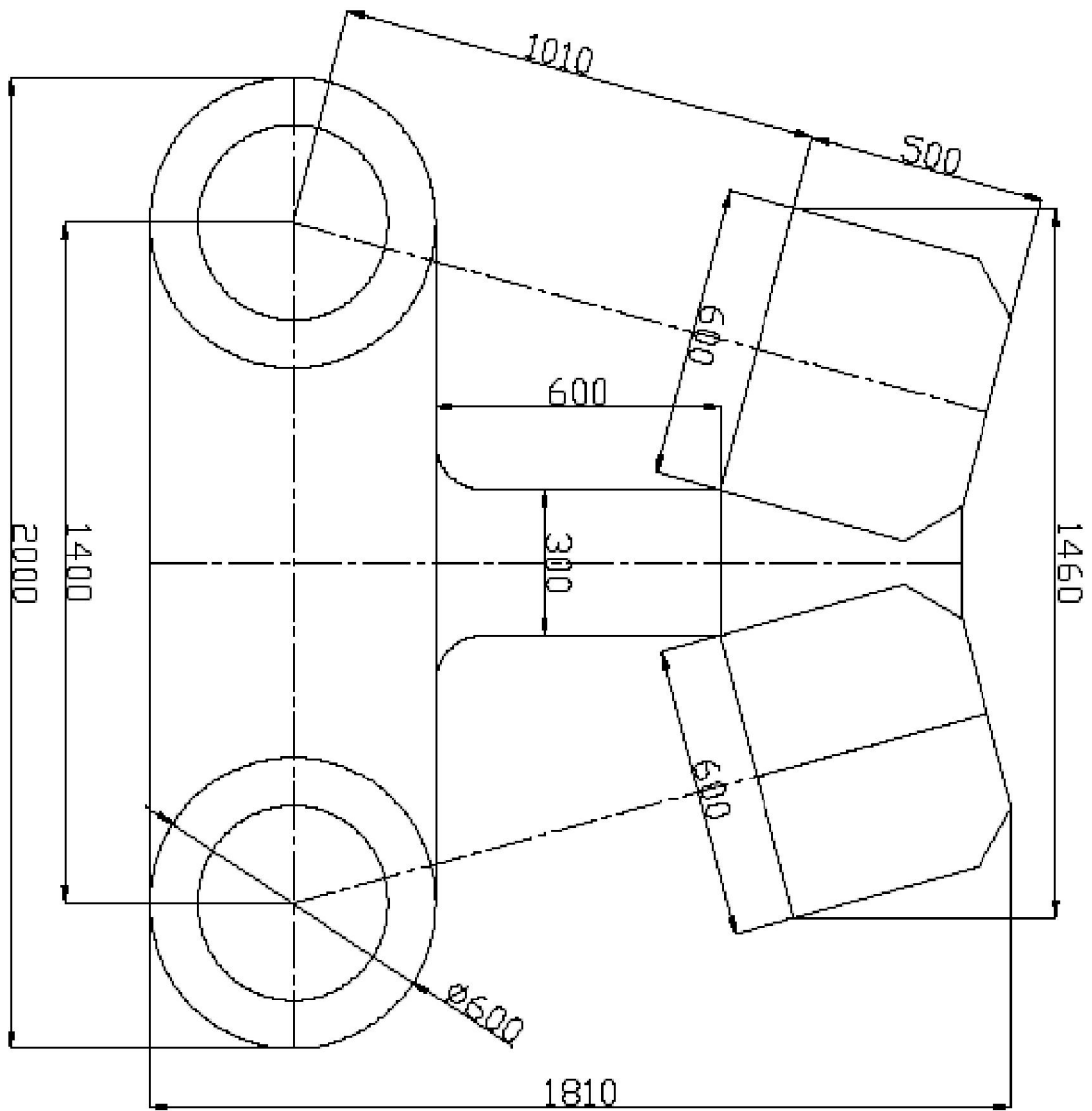
2. Digital scale incorporated (**bag weigh check devise**) for allowing passenger baggage weigh check, platform size 600 mm x 550 mm, including load cell indicator model L6G and Yahowa digital indicator



3. **Integrated statistics and pay/in data recording and transmission system.** This system is designated to transmit digital data to a nominated server via Ethernet connection, including the counter information, on/off cycles of the machine as well the foil consumption records. The system allows distance control and check of the machine functionality as well synchronised control from the authorities (access to the server is made by a scripted password) for the volume of the sales.
4. **Battery operated set** (independent operational system) including high power capacity UPS set and power switch electronics. The system is designated to support independent operation of the machine for more than one hour at full power.
5. **Space requirements of the equipment:**



*Double terminal*



**Summary space required: 5 square meters**